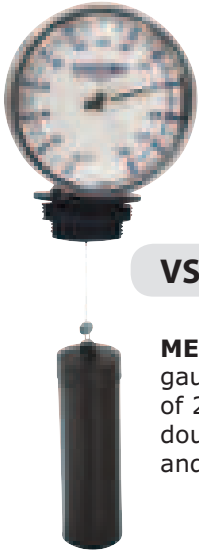


LEVEL CONTROL

MECHANICAL LEVEL CONTROL

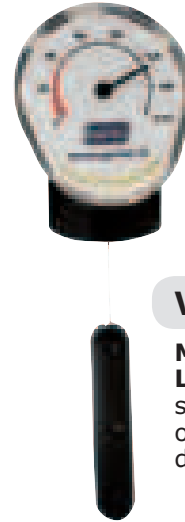


VS9902

MECHANICAL LEVEL gauge suitable for tanks of 2,4 mt. max. height - double attachment 1 1/2" M and 2" M

VS9908

PNEUMATIC REMOTE LEVEL gauge for cylindrical tanks with diameter included between 900mm and 3000mm - Possibility to calibrate



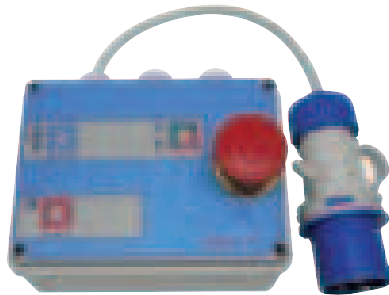
VS9906

MECHANICAL LEVEL gauge suitable for drums of 200 lt. Floating diameter mm.23

ELECTRONIC LEVEL CONTROL

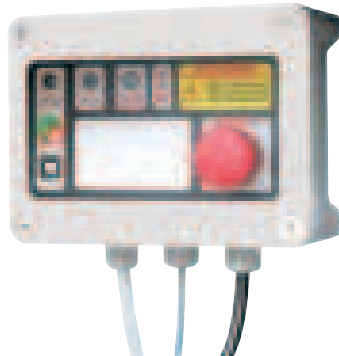
DV3511

DRIVE BOARD with: input for optical sensor, input for magnetic sensor, stock reserve warning light + temporized sounding, switch for probe cutting out, empty level warning light, emergency button supply power 230 volt



DV3512

DRIVE BOARD with: input for optical sensor, input for magnetic sensor, stock reserve warning light + temporized sounding, empty level warning light, switch for probe cutting out, emergency button supply power 230 volt



DV3515

MAGNETIC LEVEL vertical use supplied with 3mt cable



DV3513

OPTICAL LEVEL SENSOR supply power AC, 12-28 volt, liquid presence warning light. Supplied with 3mt 3 poles cable



DV3514

OPTICAL LEVEL SENSOR supply power DC 12-28 volt, liquid presence warning light. Supplied with 3mt 3 poles cable

DV9909

LEVEL-HANDLING STAFF KIT

- Includes:
- plastic staff 12mm diam.
 - length mm1500
 - adapter for level staff connection
 - pipe fitting to tank 1" M
 - screw nut for locking and regulation



LEVEL CONTROL

LEVEL CONTROL WITH PC CONNECTION

N0023

ELECTRONIC LEVEL CONTROL "OCIO"

Possibility of working in stand alone mode or to connect to a PC (through available software)



N.B. This kind of control doesn't need the "level-handling staff" **DV9909** as the product is already supplied with counterweight



N0133

SOFTWARE to connect keypad to PC. Software and interface for one tank included.

TANK ACCESSORIES

FLEXIBLE SUCTION HOSE

DV2518 - lenght mt 2,5

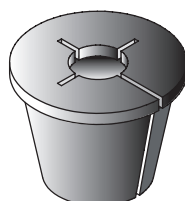
DV2519 - lenght mt 4

SPIRAL HOSE diam. 25mm for suction, complete with: foot valve with plastic screen swivel connection 1" M



DV9910

CONICAL RUBBER CAP for suction tube locking. Easy to adjust lenght of suction tube and lock



DV9604

FOOT VALVE with plastic screen Attachment 1" F



DV9605

SUCTION SCREEN hose hand attachment diam. 25mm with pipe wrench clamps of stainless steel included.

DV9614

SUCTION SCREEN hose hand attachment diam. 19mm with hose clamps in stainless steel included.

TANK ACCESSORIES

MODULAR METAL SUCTION TUBE



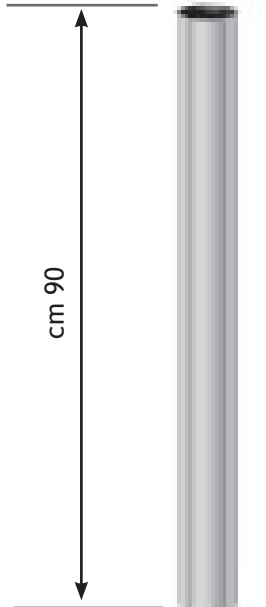
RBC5252 ELBOW 1" 90° FF



NV9025 NIPPLE ADAPTOR 1"x 35 x 1,5 MM



NV9074 BUNG ADAPTOR for drum/tank thread 2" M

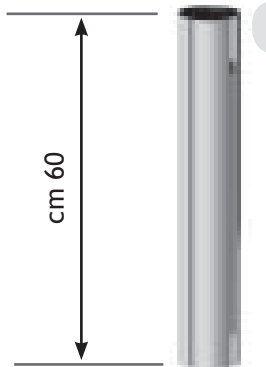


cm 90

NV9066 SUCTION TUBE diam. 35 mm length 900 mm, 2 threads 35x 1,5 mm FF

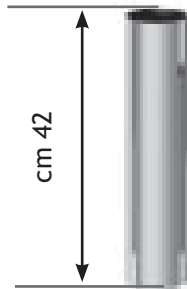


NV9004 CONNECTION NIPPLE for extensions thread 35x 1,5 mm



cm 60

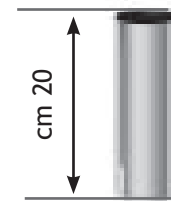
NV9024 SUCTION TUBE diam. 35 mm length 600 mm, 2 threads 35 x 1,5 mm FF



cm 42

NV9023

SUCTION TUBE diam. 35 mm length 420 mm, 2 threads 35x 1,5 mm FF



cm 20

NV9022

SUCTION TUBE diam. 35mm length 200mm, 2 threads 35x 1,5 mm FF

NV9025

NIPPLE ADAPTOR 1"x35x1,5 MM



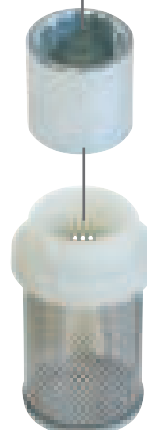
DV2516

FOOT VALVE 1" F complete with: non return valve and screen



RBM5252

JOINT 1" FF



DV2517

STEEL SCREEN pipe fitting 1" M

FLANGED PIPE FITTINGS

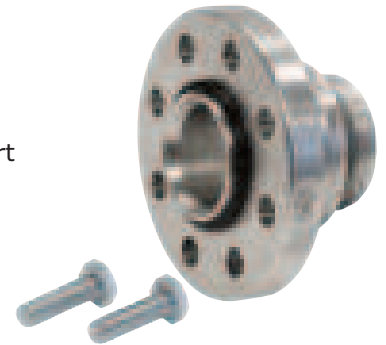
DV2511

FLANGED 90° PIPE
fitting - Made of diecasted aluminum - suggested for connection between pump and meter



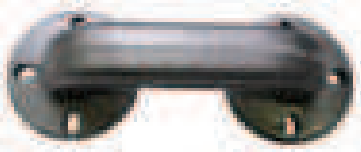
DV9615

KIT TO CONNECT FILTER
to electric pumps,
composed of:
- 1" M thread special support
multi hole flange
- screws for pump fixing
- o-ring



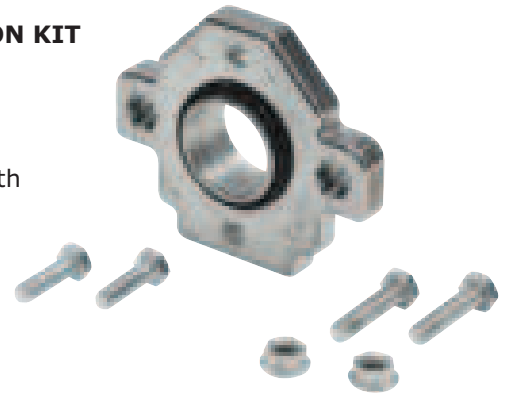
DV2512

FLANGED 180° PIPE
fitting - Made of diecasted aluminum - internal steel core - suggested for connection between pump, meter and delivery hose



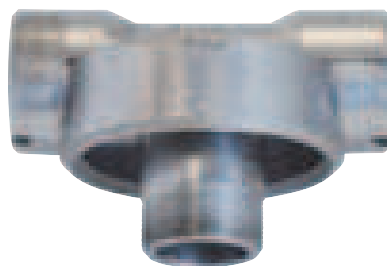
DV9616

METER CONNECTION KIT
- electric pumps.
Composed of:
- connection plate
- socket head screws
- exagonal screws with proper screw nuts
- o-ring






FILTERS

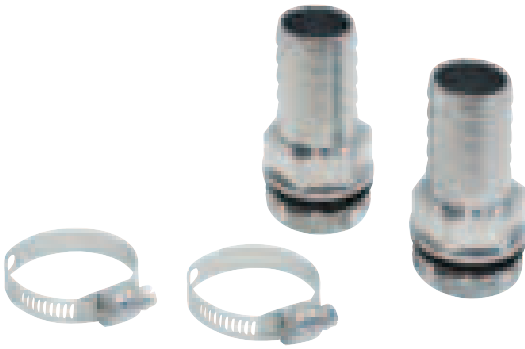
FILTER HOLDING FLANGE -
made of diecasted aluminum



DIESEL FUEL FILTER
(short version)
water and particulate filtration



		IN/OUT	Delivery liters	μ	Max Pressure BAR	Filter connection	Dirt	Humidity	filter dimention mm ø x H	 kg
DV2513	DV2514	1" bsp	95	30	3,4	1 1/2"-16UNF	*	*	95 x 136	0,5
	DV2515	1" bsp	95	30	3,4	1 1/2"-16UNF	*		95 x 136	0,5
DV2524	DV2522	1" bsp	150	30	3,4	1 1/2"-16UNF	*		127 x 289	1,4
	DV2523	1" bsp	150	30	3,4	1 1/2"-16UNF	*	*	127 x 289	1,4



- DV9600** - 1" M x 25 mm
- DV9617** - 1" M x 19 mm
- DV9603** - 3/4" M x 19 mm

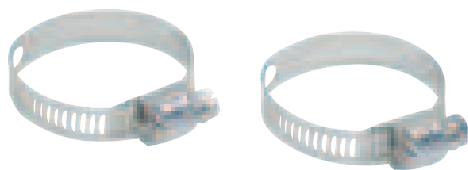
METAL HOSE FITTING KIT

with o-ring. Supplied with 2 pipe fittings - 2 steel hose clamps



- DV9602** - 1" M x 25 mm
- DV9618** - 1" M x 19 mm
- DV9601** - 3/4" M x 19 mm

SUCH as DV9600 but with plastic fittings. 1 teflon roll



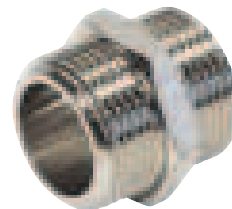
- DV9607** - 17 x 29 mm
- DV9608** - 25 x 45 mm

STAINLESS STEEL HOSE CLAMPS
(PCS 10)



ELBOW 90°

- RBC5252** - 1" F x F
- RBC4242** - 3/4" F x F
- RBC5152** - 1" F x M
- RBC4142** - 3/4" F x M



NIPPLES M x M

- RB0014** - 3/4" x 3/4"
- RBN5151** - 1" x 1"
- RBN4151** - 1" x 3/4"
- RBN3151** - 1" x 1/2"



ADAPTOR M x F

- RB0070** - 1 1/4" x 1"
- RB0088** - 1 1/2" x 1"



REDUCER F x F

- RB0010** - 3/4" x 3/4"
- RBM5252** - 1" x 1"
- RBM5242** - 1" x 3/4"
- RBM5232** - 1" x 1/2"

VARIOUS

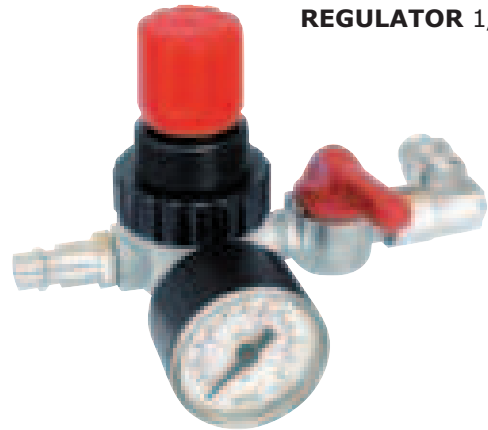
DV9606

PLASTIC TANK
breather pipe
attachment 2" M



X0186

PRESSURE
REGULATOR 1/4" M



AV9002 - 1/4"
AV9003 - 3/8"

REGULATOR FILTER
GROUP with gauge



AV9005 - 3/8"
AV9006 - 1/2"

FILTER GROUP for lubricator
regulator with gauge



AV9101 - 1/4"
AV9102 - 3/8" - 1/2"

FLANGIA DI
FISSAGGIO MURALE
PER GRUPPI FR E FRL



RBVR11 - faucet 1/4" M
RBIR11 - quick coupler 1/4" M

AV9010

3 STRAIGHT LINES
VALVE 3/8" FF

